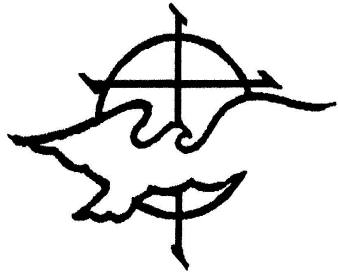


Volume 11

November 1, 2011



EMMANUEL LUTHERAN CHURCH AND SCHOOL

November 2011 Echoes

Note from Our Pastor

Dear Brothers and Sisters in Christ,

The Epistle of Jude ends with these words, “Now to Him who is able to keep you from falling and to present you without blemish before the presence of His glory with rejoicing, to the only God, our Savior through Jesus Christ our Lord, be glory, majesty, dominion, and authority, before all time and now and forever. Amen.”

As I write this letter, the Christian Church around the world prepares to embrace what God has done for His people through the events of All Saints’ Day, Christ the King Sunday, and the beginning of the Advent Season. As the Christian Church gathers to remember the importance of each of these days, there is a common theme. **GOD OUT OF HIS LOVE AND COMPASSION FOR HIS CREATION IS DOING FOR US WHAT WE CANNOT DO FOR OURSELVES.** God is entering His creation with a desire to redeem, restore, and renew His precious people. On All Saints’ Sunday, we celebrate what God revealed to the Apostle John on the island of Patmos: “God will dwell with them, and they shall be His people, and God Himself will be with them; He will wipe away every tear from their eyes, and death shall be no more, neither shall there be mourning nor crying nor pain any more, for the former things have passed away.” (Rev. 21) God has redeemed us through His Son Jesus Christ. He has taken His beloved saints out of this broken world and restored them perfectly in heaven. This is God’s doing for which we praise His Holy name!

On Christ the King Sunday, we celebrate the fact that God has the final word in our lives and those who we love. Victory belongs to the Christian. We overcome this sinful world through Christ Jesus and are blessed with the certainty that we shall be with Him forevermore. He is indeed the Lord of lords and the King of kings. (Rev. 19) He has established His kingdom and He shall reign over it forevermore. His word of grace, forgiveness, and new life rooted in the gospel is the hallmark of His kingdom; a kingdom that He called us to through our baptism and has gifted us with faith by the indwelling of His Holy Spirit. Finally, the rhythm of the Church Year begins anew with the season of Advent. Advent calls us to repentance and preparation. Advent calls us to turn toward Bethlehem and the simple manger where the Word became flesh and dwell among us. And from His fullness have we all received, grace upon grace! Advent signals to His world that He acts on our behalf. God will send His Son to do for us what we cannot do! God comes to redeem His fallen creation!

Jude reminded his fellow brothers and sisters in Christ that God was to be given all the glory, honor, and majesty because He, out of grace and love for us, was indeed doing for His creation what they could not possibly do for themselves. During the month of November, our nation marks a national day of thanksgiving. On this day, it is appropriate that we, the redeemed people of God, lift our united voices in thanksgiving for God has acted and is continuing to act in the life of His precious people. The beautiful German hymn says it so well, “Nun Danket Alle Gott” (Now Thank We all Our God): *Now thank we all our God with hearts and hands and voices, Who wondrous things has done, in whom His world rejoices; Who from our mothers’ arms has blest us on our way with countless gifts of love and still is ours today!*

May our worship this month resound with a heart filled with thanksgiving and praise to the Almighty; for indeed **GOD OUT OF HIS LOVE AND COMPASSION FOR HIS CREATION IS DOING FOR US WHAT WE CANNOT DO FOR OURSELVES.**

In His Service,

Pastor Michael McFarland

General Announcements

Echoes Submission Deadline for December is Wednesday, November 16, 2011.

The Central Blue Ridge Chapter of Thrivent Financial for Lutherans will hold their elections for the 2012 Thrivent Chapter Local Board of Directors on SUNDAY, NOVEMBER 13. Please stop by the "Thrivent Table" and cast your vote.

All Saints Sunday, is Sunday, November 6 and we will celebrate at all three services.

DAYLIGHT SAVINGS TIME CHANGE REMINDER: Sunday, November 6 our clocks "Fall back" an hour, so mark your calendars!

Thanksgiving is almost Here! This year's Congregational Thanksgiving Meal will be held on Wednesday, November 16 at 6:00 pm in the gym. Our Thanksgiving Eve Church service will be held on Wednesday, November 23 at 7 pm. Please be sure to mark these holiday events on your calendars.

Adult Choir: Come and help us make a joyful noise! The adult choir needs you. New members are needed in all sections of the adult choir. The choir meets on Wednesday nights at 7:30. If interested, please contact Kevin Lorenz at ext.135 or 775-9389.

IT'S FINALLY HAPPENING! Let's move those walls! Laborers for Christ needs church and school volunteers to help with the construction of our new elevator, narthex and office expansions. Sign-up sheets, skills and volunteer agreement forms are located on a table out in the narthex area. If you have any questions, please contact Sharon Norris at 236-3957. The more who volunteer the quicker this project build will fly! Let's get 'er done!

NEED VOLUNTEERS TO FEED Laborers for Christ and local labor volunteers Saturday Lunches—please sign-up on the sheet on the table in the narthex. Lunch Time will be at 12:00. Contact Sharon Norris for more information at 236-3957.

Pastor McFarland will be away on Military duty starting Monday, Nov. 7 through Friday, Nov. 18. If you have a pastoral care emergency please contact Pastor Mark Seaman at 252-1795 or 361-739-6014.

CHANGE: El Salvador Mission Trip: Lisa Greene received news from Capital One that they are postponing the mission trip until they can get approval to show the girls' faces in the video that they want to produce. She was sad to hear this news, but feels that something can eventually be worked out. She has decided to wait to go until she can spend more time there, since this was going to be a very hectic time to get away. Any money donated will still be used to support the girls in El Salvador and donations are always welcome. Thank you.

ALL BOYS 6th grade and up! ELCS is exploring starting a Boy Scout Troop. We need all interested adult volunteers and boys to contact Julie Strum at strumj@yahoo.com. Our resident Eagle Scout, Pastor Seaman, is excited to assist. The goal would be a Troop by early Spring.

Decorating the Church for Advent! Please mark your calendars for Saturday, December 3 at 10:00 am. We can use ALL AVAILABLE HANDS out here to help get the church ready for Advent season. Hope to see you there!

Leisurites will meet next on Tuesday, November 15 at 10:30 for their Annual Business Meeting at church in room 104. Please mark the this important meeting on your calendar. Lunch will be at Cheddars Restaurant.

ABCCM Crisis Ministry: The Crisis Ministry provides emergency assistance for individuals and families in crisis by supplying food, clothing, furniture, heating, utility and rent assistance. A table is located in the narthex for donations of canned foods towards this ministry. **The ABCCM Donation focus for November: canned potatoes.** Thank you for your continued support of this ministry.

"Ah, Nuts!" LWML members heard that a lot last year, when all our pecans were sold before everyone got what they wanted. To avoid that happening to you, please look for the sign-up sheets, and place your orders. This year, we will have: Dark Chocolate Covered Pecans and Milk Chocolate Covered Pecans, both for \$12 a bag. We will also have: Large Pieces, Small Pieces, and Halves which will be \$10 a bag. Pecans have been named a very healthy nut, so not only does your purchase help LWML to give to worthy causes through out the year, but it also contributes to your well-being and taste buds.

Did You Know? Emmanuel Lutheran School sent \$366.93 to LCMS World Mission in Panama? That is the total of the offerings from the school and pre-school chapel services held during the month of October.

Daniel Sullivan's Eagle Scout service project is putting together care packages for troops overseas. He is short about 100 tubes of 6 oz toothpaste. If you have any 6 oz tubes of toothpaste laying around the house and would like to help, there will be a donation box on the ABCCM table.



Groups

Helping Hands for November is Sue Harris and Irene Kaeding. If you know of a need, please contact them or the church. You may retrieve your serving dishes from the cabinet labeled “Helping Hands” in the church kitchen.

Monday Night Bible Study meets on Mondays at 7:00 pm in room 104. For more information, please contact Marge Hansel at 670-8975.

The Outreach Singers sing for local nursing home facilities, rescue missions and prison ministries approximately once a month. For more information, please contact Doug or Martha Greene at 669-0212. Next visit: Sunday, November 27 at Asheville Health Care at 2:30 pm. Carpoolers—please meet at the church parking lot at 2:00 pm.

Women’s Bible Study group led by Deb DeBerry meets on Wednesdays at 9:00 am in room 104. All women are welcome!

Pastor’s Small Group Meetings are on Mondays and Wednesdays at 12:45 pm in room 104. For more information, please contact Pastor McFarland at pastormcfarland@elcsmail.org.

Nordmeyer Small Group Study meets at 6:30 pm on Mondays at their home in Haw Creek (call 512-789-1314 for directions).

Greene/McMahan Small Group Study meets at 6:30 pm on Mondays in the church youth room. Call 669-0212 for more info.

Schallhorn Small Group Study meets on Monday evenings at 7:00 pm at their home (call 667-4112 for directions).

Kaeding Small Group Study meets on Mondays at 7:00 pm at their home (call 687-7821 for directions).

Baldwin Small Group Study meets on the first Sunday of every month at 7:00 pm (call 628-9537 for directions).

Genesis II meets at 10:30 am in room 104 every second Monday of the month. For more info, contact Jean Stiemke at 299-1534.

Cub Scouts meet on different days/times of the week depending on the age group. For more info, contact Julie Strum at 665-9030.

Girl Scouts meet on the 2nd and 4th Mondays of the month at 3:15. There are four different age levels offered. If you would like for your daughter/granddaughter to be a part of this enriching opportunity, contact McKenzie Koon at 298-4488 for more details.

LWML meets on the first Tuesday of the month in the media center. For more info, please contact Elaine Schallhorn at 667-4112.

Shelter Meals: On the first, second, third and fifth Monday of every month, Emmanuel provides lunch for the local ABCCM men’s veteran shelter ministry. If you would like to help out with cooking or serving, please contact Judith Walter at 545-3097.

Bushwhackers: We need volunteers to help keep down growing weeds, plant and prune shrubs and trees, mulch beds and to maintain our greenway. We gather the 3rd Saturday of each month (except Dec-March.) from 8:00am–12:00. Please contact Gerry Hardesty (299-3315) for more information.

Church Choir meets on Wednesdays at 7:30 pm in the music room. Please contact Kevin Lorenz for more information if you are interested in joining.

Handbells meets on Wednesdays at 6:30 pm in the music room. Please contact Kevin Lorenz for more information, or if you are interested in joining.

Linus Blankets: Providing security through blankets. Blankets created in Buncombe County go to thirty different agencies, such as hospitals, shelters, police/fire/sheriff departments, etc. Our group meets the 2nd Tuesday of every month in the church Fellowship Hall from 1:30-3:00 pm. Best part—no sewing! Just bring a pair of scissors. For more info, contact Marge Hansel at 670-8975.

Youth Activities

Saturday, November 5—Manna Food Bank—Junior Youth will meet at Manna Food Bank at 8:45 am. We will serve from 9-12 pm. Wear your black junior youth shirts—if you do not have one yet we have one for you.

Friday-Sunday, November 11-13—SENIOR YOUTH FALL RETREAT—In Cary, North Carolina. Contact Pastor Mark Seaman if you have any questions about the trip.

Friday, December 9—Junior Youth will lead Bingo at Emerald Ridge Nursing Home. We will meet at the church parking lot at 6:15 pm to go and spend some time with the residents of Emerald Ridge Nursing Home. Bingo is at 7:00 pm.

Open an LCEF Health Savings

Open an LCEF Health Savings Account (HAS FlexPlus Certificate) with Pre-Tax and Tax-Deductible Contributions. Many employers offer a High-Deductible Health Plan (HDHP) and with that choice, an HSA allows employees to use their HSA Certificate to pay for qualified medical expenses with pre-tax and tax-deductible funds. As a plus, your balance carries over from year to year with no "use or lose" restrictions while earning competitive interest rates. For more information, check the website at www.lcef.org or call Cindy Haupt or Vicki Edwards at 800-637-5723.

Anniversaries

November 7	Gerald and Peg Hardesty	November 25	Peter and Lisa Causer
November 8	Steve and Cyndi Slocumb	November 29	Bernie and Grace Conrad
November 11	David and Traci Meyer		James and Anne Frisbee
November 12	Luis and Jennifer Duran		John and Colleen Gillan
November 16	Ken and Carol Treadway		Daniel and Rebecca Salomon
November 22	Ed and Debbie DeBerry		

Birthdays

November 1	Pat Isaac Carol Treadway	November 16	Peter Rauschenplat	November 28	Scott Schulhof
November 2	Kathy Ridgeway	November 17	Mark Clair Seth Slocumb	November 29	Michael Ausbrooks Shannon Gryder
November 3	Bill Parker	November 19	Kimberly Anderson		Margaret Hardesty
November 4	Lance Winkler John Wolter	November 20	Lisa Baldwin Bernie Conrad Patti Reece Barbara Roseman	November 30	Samuel McFarland
November 5	Lou Mitchell Seth Nordmeyer	November 22	Haley Jennings Mark Seaman		
November 6	Bruce Strum	November 23	Noah Bair Phillip Leyva		
November 7	Ken Bailey Lori Benson Shania Bonvillain	November 24	Charles Sands		
November 9	Allen Dries	November 25	Grace Conrad		
November 10	Samuel Bair	November 26	Kellie Bouvet Michelle Huff Zoe Martin		
November 11	Sydney McCarthy	November 27	James Carpenter		
November 12	Lucy Schell				
November 14	Robert Mathis				
November 15	Kristina Chesley				

Memorials

Received in Honor of:

Jim Lawson:

From: Eileen Brehm, Jim and Judy Clark, Don and Marjorie Locke, Rich and Lisa Baldwin, Rich and Amy Bair, Pete and Sherry Rauschenplat, Ed and Elaine Schallhorn, Don and Marilyn Weaver, Cheri Dennis, Minnie Hollar, David and Kathy Ludwig, Paul and Donna Tate, Tom and Tracey Rich, Helen Walsh, David and Traci Meyer, David and Helen Janisko and Claude and Sue Harris.

School News

Upcoming Events

11/3&4	Parent-Teacher Conferences
11/9	School Collection of shoe boxes for Operation Christmas Child
11/10	Martin Luther's Birthday
11/19	Asheville Holiday Parade (see school entries)
11/21&22	No School K-8 – teacher conference; ECE & Extended Care open
11/23-25	Thanksgiving – all school programs closed

Nutrition Changes

Last fall the PTL initiated a survey to parents regarding the ELS school lunch menu. The strong consensus is that parents want a healthier menu provided for their child, even if it costs a little more. We're listening.

After consulting with North Carolina State University's Cathy Hohenstein, who is an extension agent for their Family and Consumer Sciences—Nutrition area, we will be introducing the new menu to our students in October. We are eliminating canned vegetables in favor of fresh or flash frozen and adding more fresh fruit to our menu. Our entrees will be grilled instead of breaded, consist of all whole grains, and include no processed meats. The menu will include lower calorie, and lower sugar items. Chocolate milk has been eliminated as a choice.

Additionally, we have a special emphasis this year on international studies. We will bring this theme into our cafeteria, as well. Each month we will have a special menu, dedicated to exposing the children to food from a highlighted country. Watch for more information about this exciting endeavor. We thank the PTL for their collaboration with various international cuisine restaurants in Asheville.

The menu changes can be attributed to the cooperative work of our principal, early childhood director and kitchen manager. We will be closely monitoring the costs and labor needed to fully implement these changes and then adjust our pricing accordingly. At Emmanuel Lutheran School our goal is to instill healthy eating habits that will follow our children into adulthood.

Did You Know?

Statistics on Non-Public Education in the United States

- About 5.12 million students are in private schools, approximately 10% of all US elementary and secondary school students (2003-04)
- Over 28,000 schools are private, approximately 23% of all US schools (03-04)
- About 82% of private school students attend religious schools, and 18% attend nonsectarian schools (03-04)
- About 76% of private schools are religiously affiliated, and 24% are nonsectarian (03-04)
- Tuition averages about \$4,300 for elementary schools, \$10,600 for secondary schools and \$6,900 for combined schools (03-04)
- About 1.1 million students were homeschooled in spring 03, approximately 2.2% of US students ages 5-17.
- (US Department of Education, National Center for Education Statistics.)

Milestones

Several of our teachers and staff have reached milestones. These include:

Mrs. Jeanne Quinn – 5 years at ELS
Mrs. Christina Smith – 5 years at ELS
Miss Lisa Wooten – 5 years at ELS
Mrs. Cookie Hollifield – 5 years at ELS
Mrs. Heather McCarthy – 5 years at ELS
Mr. Luke Schmelzle – 5 years at ELS
Mrs. Felesia Norton – 10 years at ELS
Dr. Kevin Lorenz – 15 years at ELS

Be sure to thank these fine staff members for their service.

Note from Our Associate Pastor

Men, how manly are you?

Bonnie Tyler sang it in the 80's and we feel it today, "Where have all the good men gone...Isn't there a white knight upon a fiery steed? ...I need a hero. He's gotta be strong, And he's gotta be fast, And he's gotta be fresh from the fight...I need a hero." With broken families, absent fathers and all the rampant gender confusion in today's society, one may well ask, "Where have all the good men gone?"

A recent "Manvotional" by Brett and Kate McCay from *artofmanliness.com* commented on the increase of books published during the 1800s and again beginning around 2000 that contained the words "manhood" and "manliness".

"The number of books mentioning manhood begins to precipitously rise during the 1820s, and then begins to tumble around the turn of the 20th century. These dates also roughly parallel the timeline of the Industrial Revolution...For men who had felt their manliness defined by the owning of land or the membership in a guild, this was a wrenching change. What would being a man mean in the absence of the nobility of working with one's hands and the dignity of true independence and self-reliance? Could a man still be a man while pulling the lever at a factory or sitting at a desk in an office?"

And again in the 21st century;

"The information age has made more and more jobs feel less and less tangible. At least the men in factories did something with their hands...can men still be men if they're only using their fingertips?"

What is the solution to the crisis we find ourselves in?

"By moving away from defining manliness by a man's job, and re-rooting it in virtue and excellence...being a man [comes] down to character. A man [is] industrious and frugal, responsible and trustworthy, courageous and bold. This definition of manhood could be striven for by any man, no matter what sphere of life he found himself in. Whether he was tilling the land or working the assembly line or sitting in an office, he could live with honor."

This "Manvotional" rings true with me. It resonates because it is not defining manhood as the world defines it, but echoes with truth from scripture of who we are as men of God and what we should be striving to be. The God of Holy Scripture, the Creator of men is the one who defines what true manhood is. One of my favorite manly mantras from scripture resounds from I Peter 2:16-17; "Live as free men, but do not use your freedom as a cover-up for evil; live as servants of God. Show proper respect to everyone: Love the brotherhood of believers, fear God, honor the king."

A real man is respectful to all people regardless of their color or creed. He loves, cares for and wants to be part of Christ's church. A true man is reverent before God and patriotic. He honors the governing authorities and laws of this land. In the 19th century Josiah Gilbert Holland penned, "GOD, give us men! A time like this demands Strong minds, great hearts, true faith and ready hands; Men whom the lust of office does not kill; Men whom the spoils of office can not buy; Men who possess opinions and a will; Men who have honor; men who will not lie; Men who can stand before a demagogue And damn his treacherous flatteries without winking! Tall men, sun-crowned, who live above the fog In public duty, and in private thinking; For while the rabble, with their thumb-worn creeds, Their large professions and their little deeds, Mingle in selfish strife, lo! Freedom weeps, Wrong rules the land and waiting Justice sleeps. "

Men, your wife and children need you! The brotherhood of believers needs you and society is crying out for strong and loving leadership from real men today.

Love the brotherhood of believers, fear God, honor the king!

Pastor Mark Seaman

Thank You

From Mary Lawson: "I just want to express my heartfelt thanks and gratitude for all the care, goodness, flowers, food and other wonderful acts and words of love and kindness that have been extended to me and my family over the past couple of weeks. Thank you so very much, and may God bless you all."

From Barbara Peterson: "Dear Emmanuel Family: Thanks for all your prayers, cards, calls, and concerns during my illness. These are greatly appreciated as I currently undergo therapy and continue to slowly improve."

November Server List

SERVICE TIMES	ACOLYTES	COMMUNION SERVERS	LECTORS	GREETERS	CHILDREN'S MESSAGE	
Sunday November 6 <i>All Saints Sunday</i> <i>Time Change</i>	8:30 HC	Madison Duran	Pastor Seaman Stuart Thorp	Pastor Seaman	Ken & Barbara Schmitz	Mike Rush
	11:00 HC	Brooke Reaves	Deb DeBerry Ryan DeBerry P&W Don Baker	Deb DeBerry	Bruce & Julie Strum P&W Janet Bennett & Gloria Connell	Megan Sanchez
Sunday November 13 Worship	8:30	Ian McCarthy	—	Marjorie Locke	Matt & Christine Smith	Kay Thorp
	11:00 HC	Bailey Strum	Tommy Ridgeway Kathy Ridgeway P&W Rich Baldwin	Tommy Ridgeway	Teenie Smathers & Carole Williams P&W Don Baker & Shirley Wilson	
Sunday November 20	8:30 HC	Noah Bair	Pastor Seaman Ken Treadway	Pastor Seaman	Walter & Alice Smith	Elaine Schallhorn
	11:00 Worship	Tyler Craig	— P&W Don Baker	Gary Pressley	Brian & Jill Arldt P&W Doug & Martha Greene	Jim Reaves
Wednesday November 23 <i>Thanksgiving Service</i>	7:00pm	—	Adam Bennett	Adam Bennett	—	—
Sunday November 27 Worship	8:30	Justin Kearley	—	Frieda Cooper	Bernard Smith & Don Spude	Luke Schmelzle
	11:00 HC	Griffin Groh	Doug Piercy Gerry Hardesty P&W Rich Baldwin	Doug Piercy	Seth & Brenda Baker P&W Mark & Nancy Jankowski	
Usher Schedule			Altar Guild			
Sunday 8:30: Team 3 - Bernard Smith, Jim Mitchell and George Banjak			Sunday 8:30: Carol Bergholz			
Sunday 11:00: Team 12 - Donny Luke, Ed DeBerry, James Leyva and Phillip Leyva			Sunday 11:00: Stephanie Hanson, Sherry Rauschenplat & Peg Hardesty			
Sunday P&W: Pete & Sherry Rauschenplat			P&W: Cheryl Wills, Martha Greene, Tracey Carpenter & Sherry Rauschenplat			
Helping Hands: Sue Harris and Irene Kaeding			Counters: Bruce and Julie Strum			

November Calendar

Sun	Mon	Tue	Wed	Thu	Fri	Sat
		<p>1</p> <p>11:00a Staff Meeting 3:00p Piano</p> <p>5:30p LWML</p>	<p>2</p> <p>8:10/10a ELS Chapel 9:00a Women's Bible Study Noon Service 12:45p Pastor's Small Grp</p> <p>6:30p Handbells 7:30p Choir</p>	<p>3</p> <p>ELS K-8 Parent/Teacher Conferences-release at 1pm 8:00a Moms in Touch 2:30p Piano</p> <p>7:00p Worship Team</p>	<p>4</p> <p>ELS K-8 Parent/Teacher Conferences-release at 1pm</p>	<p>5</p> <p>9:00a Open Gym—ELS 9:00a Jr Youth at MANNA Foodbank</p>
<p>6 All Saints Sndy</p> <p>8:30a Church Service 9:45a Sunday School 11:00a Church Services</p> <p>SHOE BOX COLLECTION</p> <p>DAYLIGHT SAVINGS ENDS</p> <p>7:00p Baldwin Bible Group</p>	<p>7</p> <p>Shelter Lunch 12:45p Pastor's Small Group 5:30p Cub Scouts 5:30p PTL Meeting 6:30p Greene/McMahon Grp 7:00p Nordmeyer Bible 7:00p Monday Nite Bible 7:00p Kaeding Bible 7:00p Schulhorn Bible</p>	<p>8</p> <p>11:00a Staff Meeting</p> <p>1:30p Lims Blankets 3:00p Piano</p>	<p>9</p> <p>8:10/10a ELS Chapel 9:00a Women's Bible Study Noon Service 12:45p Pastor's Small Grp</p> <p>6:30p Handbells 7:30p Choir</p>	<p>10</p> <p>8:00a Moms in Touch 2:30p Piano</p> <p>5:30p Booster Mtg 6:30p Parish Admin Mtg 7:00p Worship Team</p>	<p>11</p> <p><i>Sun Youth Retreat in Cary, NC</i></p>	<p>12</p> <p><i>Sun Youth Retreat in Cary, NC</i> 9:00a Open Gym—ELS</p>
<p>13</p> <p><i>Sun Youth Retreat in Cary, NC</i> 8:30a Church Service 9:45a Sunday School 11:00a Church Services</p> <p>SHOE BOX COLLECTION</p>	<p>14</p> <p>Shelter Lunch 10:30a Genesis II 12:45p Pastor's Small Group 3:15p Girl Scouts 3:30p Staff Meeting 5:30p Cub Scouts 6:30p BOD Mtg 6:30p Greene/McMahon Grp 7:00p Nordmeyer Bible 7:00p Monday Nite Bible 7:00p Kaeding Bible 7:00p Schulhorn Bible</p>	<p>15</p> <p>10:30a Leisurites 11:00a Staff Meeting</p> <p>3:00p Piano 4:00p Staff Volunteer Project</p>	<p>16</p> <p>8:10/10a ELS Chapel 9:00a Women's Bible Study Noon Service 12:45p Pastor's Small Grp</p> <p>6:00p Thanksgiving Dinner</p>	<p>17</p> <p>8:00a Moms in Touch 2:30p Piano</p> <p>6:00p SMT Mtg 7:00p Worship Team</p>	<p>18</p> <p>3:30p Parade Practice</p>	<p>19</p> <p>8:00a Bushwhackers 11:00a Asheville Christmas Parade—ELS will be participating</p>
<p>20</p> <p>8:30a Church Service 9:45a Sunday School 11:00a Church Services</p>	<p>21</p> <p>Shelter Lunch ELS K-8 Closed / Tchr Conf 12:45p Pastor's Small Group 5:30p Cub Scouts 6:30p Greene/McMahon Grp 7:00p Nordmeyer Bible 7:00p Monday Nite Bible 7:00p Kaeding Bible 7:00p Schulhorn Bible</p>	<p>22</p> <p>ELS K-8 Closed / Tchr Conf</p> <p>3:00p Piano</p>	<p>23</p> <p>HOLIDAY—SCHOOL PROGRAMS CLOSED Noon Service 12:45p Pastor's Small Grp</p> <p>6:00p Handbells 7:00p Thanksgiving Service 8:00p Choir</p>	<p>24</p> <p>HOLIDAY—SCHOOL PROGRAMS CLOSED</p> <p>THANKSGIVING DAY</p>	<p>25</p> <p>HOLIDAY—SCHOOL PROGRAMS CLOSED</p>	<p>26</p>
<p>27</p> <p>8:30a Church Service 9:45a Sunday School 11:00a Church Services</p> <p>2:30p Outreach Singers</p>	<p>28</p> <p>12:45p Pastor's Small Group 3:15p Girl Scouts 3:30p Staff Mtg 5:30p Cub Scouts 6:30p Greene/McMahon Grp 7:00p Nordmeyer Bible 7:00p Monday Nite Bible 7:00p Kaeding Bible 7:00p Schulhorn Bible</p>	<p>29</p> <p>11:00a Staff Meeting</p> <p>3:00p Piano</p>	<p>30</p> <p>8:10/10a ELS Chapel 9:00a Women's Bible Study Noon Service 12:45p Pastor's Small Grp</p> <p>6:00p Handbells 7:00p Advent Service 8:00p Choir</p>			

LWML Advent Tea

Advent Tea—Sunday, December 4 “Move Me Closer to the Child.” Many of you look forward to hearing this beautifully sung by Colleen Leyva at the annual Advent Tea. This event is sponsored by the LWML to celebrate the coming of our Savior. Emmanuel. God With Us. This is such a beautiful and meaningful way to start off the season in the right spirit. We hope you will join us on Sunday, December 4 at 4:00 pm in the gym.



If you would like to decorate a table, please notify Elaine Schallhorn or Carole Williams or sign-up to do so. The different decorations on each table are part of the fun! This is a pot-luck with each person bringing their favorite dessert, snack, or goodie to be shared by all. We hope you will put your name on the sig-up sheet, so we can plan for an accurate (or close to) number. If you have a talent that you would like to share (song, music, dance, reading) we would love to have you be a part of the entertainment. Again, just let us know.

We pray that you will join us in this wonderful time of sharing.

SIGN OF THANKFULNESS

Create this festive sign, which will serve as a yearlong reminder to be grateful.

What you need:

- Hole punch
- Large piece of cardboard or cardstock
- Twine
- Twigs
- Glue
- Acorns, leaves (real or silk) and raffia

What you do:

1. Punch two holes in the top of the cardboard.
2. Thread twine through the holes and tie it in a knot (for hanging).
3. Using twigs, spell out “Be Thankful,” “Thank God” or a similar phrase about gratitude. Glue the twigs onto the cardboard.
4. Decorate the sign by gluing on acorns, leaves and raffia.
5. Hang up your sign. Whenever you see it, think of something for which you’re grateful to God.



PUZZLE

Give Praise

Solve this puzzle to read a Bible verse about praising God for all his blessings.

Directions: In each group, underline the word that doesn't belong. Then write the underlined words on the lines below.

1. Give Take Grab	2. peanut praise pear	3. temple house LORD	4. proclaim past present	5. name boy lad	6. ruin destroy make
7. pine acorn known	8. train nations bus	9. done donut muffin	10. Sing Sleep Yawn	11. she him girl	12. sun praise moon
13. tell fast slow	14. red all blue	15. horrible dreadful wonderful	16. acts sisters aunts		

“ _____ to the _____, _____ his _____ ;
 _____ among the _____ what he has _____ .
 _____ to _____, sing _____ to him; _____ of _____ his
 _____ .” PSALM 105:1-2, NIV

Answers: 1. Give, 2. praise, 3. LORD, 4. proclaim, 5. name, 6. make, 7. known, 8. nations, 9. done, 10. Sing, 11. him, 12. praise, 13. tell, 14. all, 15. wonderful, 16. acts
 Give praise to the LORD, proclaim his name; make known among the nations what he has done. Sing to him, sing praise to him; tell of all his wonderful acts. (Psalm 105:1-2, NIV)

Caregiver Corner—For those who provide care for a loved one

Do You Have a Tendency to Worry?

Walking into church this week, many people were talking about how nice the cool morning was and without exception they all finished that sentence with . . . but we know what's coming (meaning winter). It was so interesting to hear everyone talk about being so happy that it was a gorgeous cool morning, but then that happiness was tempered with concern about what was imagined to come. Concern? Worry? Is there anything to be gained by worrying?

Let's look to see what scripture says:

Never worry about anything. But in every situation let God know what you need in prayers and requests while giving thanks (Philippians 4:6, GW).

"Worry" literally means "to be pulled in different directions." The old English root from which we get our word "worry" means "to strangle."

"Worry strangles our peace and weakens our faith.

Worry is a control issue.

Worry is wasted energy.

Worry is consuming and unhealthy.

Worry is a joy thief.

Worry makes everything seem bigger than it really is." – Mary Southerland, Author

Mary goes on to say, "Paul gives us the formula for eliminating worry and establishing peace when he writes 'in every situation let God know what you need in prayers and requests while giving thanks.' In this verse, prayers are thoughts spoken to God while requests are specific needs presented to God. In other words, if it is big enough to concern us, it is big enough to concern God. Prayer should be our first response. Aside from God's power, we are helpless and lost. Peace comes while we are on our knees before Him in prayerful dependence. Paul reminds us that we are to pray about everything."

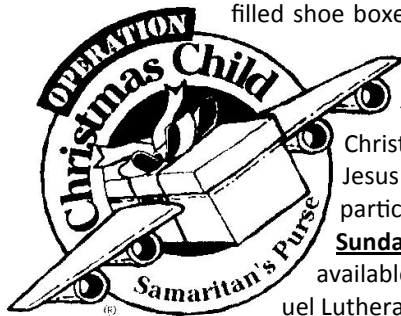
It's difficult to read those words when we worry almost every day about our loved ones, our children, our grandchildren, our friends, our extended family. But isn't it comforting to read that "peace comes while we are on our knees before Him in prayerful dependence"? We need to leave our burdens at the foot of the cross. Leave them there! Don't go back and pick them up again.

When we feel worry creeping into our lives, we need to take a deep breath and remind ourselves that God is in control. The outcome isn't always as we would wish, but God knows what's best for each of us.

— Reprinted with permission from *NUGGETS OF HOPE*, a Newsletter for Caregivers, October 2011, www.karenboerger.com

Operation Christmas Child

Operation Christmas Child is an exciting project of Samaritan's Purse that demonstrates God's love to needy children through gift-filled shoe boxes. Caring individuals and groups fill shoe boxes with toys, school supplies, and other needed items. With the help of compassionate people around the world, we deliver the boxes to millions of children affected by war, poverty, disease, and disaster. The shoe box gifts are a tremendous blessing to hurting boys and girls, most of whom have never received any Christmas presents. They open doors to introduce children and their families to God's greatest gift, Jesus Christ, and many lives are changed for eternity. Emmanuel Lutheran Church and School will be participating in this worthy project this holiday season. **Please bring your filled boxes to church on Sunday, November 6th or 13th.** Extra instructional brochures with the "Boy" or "Girl" labels are available in the narthex, the lower lobby or church office. This program is being sponsored by Emmanuel Lutheran School, thank you for your continued support!





Experience the exotic Bethlehem marketplace as it might have been on the day Jesus was born.

Thursday, December 8 6:00-8:30pm
Friday, December 9 6:00-8:30pm
Saturday, December 10 2:00-8:30pm
Sunday, December 11 2:00-6:00pm

Hosted by Groce UMC
954 Tunnel Road Asheville, NC 28805



Cast members are needed

Entertainers needed for 30 minute shifts

Holy Families needed babies up to 3 months for 75 minute shifts

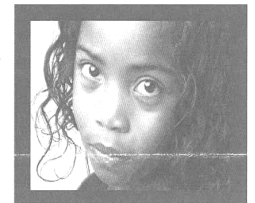
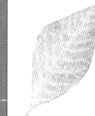
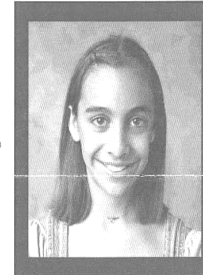
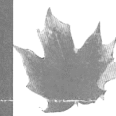
Presented as a Gift to the Community
by
Asheville Buncombe Community Christian Ministry

To volunteer or for more information:
Cheryl Wilson: cheryl.wilson@abccm.org
or 259-5300 ext 327

Foster & Adopt Fall Festival

Saturday, November 12th, 2011
2:00 — 5:00 pm
(Free - Drop in anytime!)

Come learn more about foster parenting and about the older children who are waiting for adoption. There will also be crafts for kids to do, giveaways, snacks, and more!



Crowne Plaza Hotel

Off of I-240 in Asheville on Resort Drive between Sam's Club and Westgate Plaza

Free! For more info call: 828-250-5868
or email: familiesforkids@buncombecounty.org

**EMMANUEL LUTHERAN CHURCH
EMMANUEL LUTHERAN SCHOOL**

51 Wilburn Place, Asheville, North Carolina 28806
Phone: 828-252-1795 (church) / 828-281-8182 (school)
FAX: 828-285-0064
email: churchoffice@elcsmail.org (church)
schooloffice@elcsmail.org (school)

Save us the stamp—sign-up for electronic delivery today! Just go to our website and sign-up at the bottom of the home page.

EMMANUEL LUTHERAN CHURCH
Rev. Dr. Michael McFarland, Pastor
Rev. Mark Seaman, Associate Pastor
Sunday School & Bible Classes —9:45 am
Sunday Liturgical Worship Services —8:30 and 11:00 am
Praise & Worship Service —11:00 am (gym)
Wednesday Communion Service —Noon

EMMANUEL LUTHERAN SCHOOL
Luke Schmelzle, Principal
Caroline Marino, Early Childhood Director
Infant / Toddler Care / Pre-School for 2-4 year olds
Kindergarten through Grade 8

[www.emmanuel Lutheran.info]

November 2011 *Echoes*